



Travel information

Football Arena Munich
EURO 2020 Offices
Welcome Zone Süd
Werner-Heisenberg-Allee 25
80939 Munich

By Car

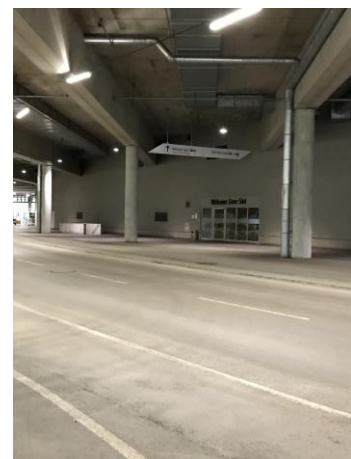
If you are arriving by car, you can enter the arena area via the entrance S0 and S1. After passing the barrier, you will pass the entrance of the “Welcome Zone Süd” and turn right into the parking area after about 200 meters (picture 1).



Picture 1



Picture 2



Picture 3

If you drive straight you get the view as shown in picture 2. You can park your car in this parking slot. If you go back in direction to the Arena, you see “Welcome Süd” (picture 3). Please ring at number 3 and we will open you the door. Use elevator T3 and drive to level 4. When you get out of the elevator, please walk around the corner to the left twice and you will be standing in front of the EURO 2020 Offices.

Public Transport

You can reach the Football Arena Munich by underground U6 direction Garching-Forschungszentrum or Fröttmaning. Get off at the station Fröttmaning and follow the signs to the arena. As soon as you go up the esplanade, please keep left. Approx. 100 meters before the main entrance you will find the servicegate on your left (turnstile, picture 4). Please use the intercom, state your name and the information that you are invited to a volunteer interview in the EURO 2020 Offices.

After you have walked down the ramp, please keep to the right and walk to the entrance of Welcome Zone Süd (picture 5). There you have to ring the bell again (3 - Information) and mention your name again as well as the appointment in the EURO 2020 Offices. Then take the elevator to level 4 and turn left twice before you finally reach the EURO 2020 Offices.



Picture 4



Picture 5

We wish you a pleasant arrival and look forward to your visit in our Euro 2020 Offices in the Football Arena Munich!